

MAP OF
ALTAMONT
 Top Of Paris Mountain 6.5 Miles From Court House
GREENVILLE COUNTY S.C.

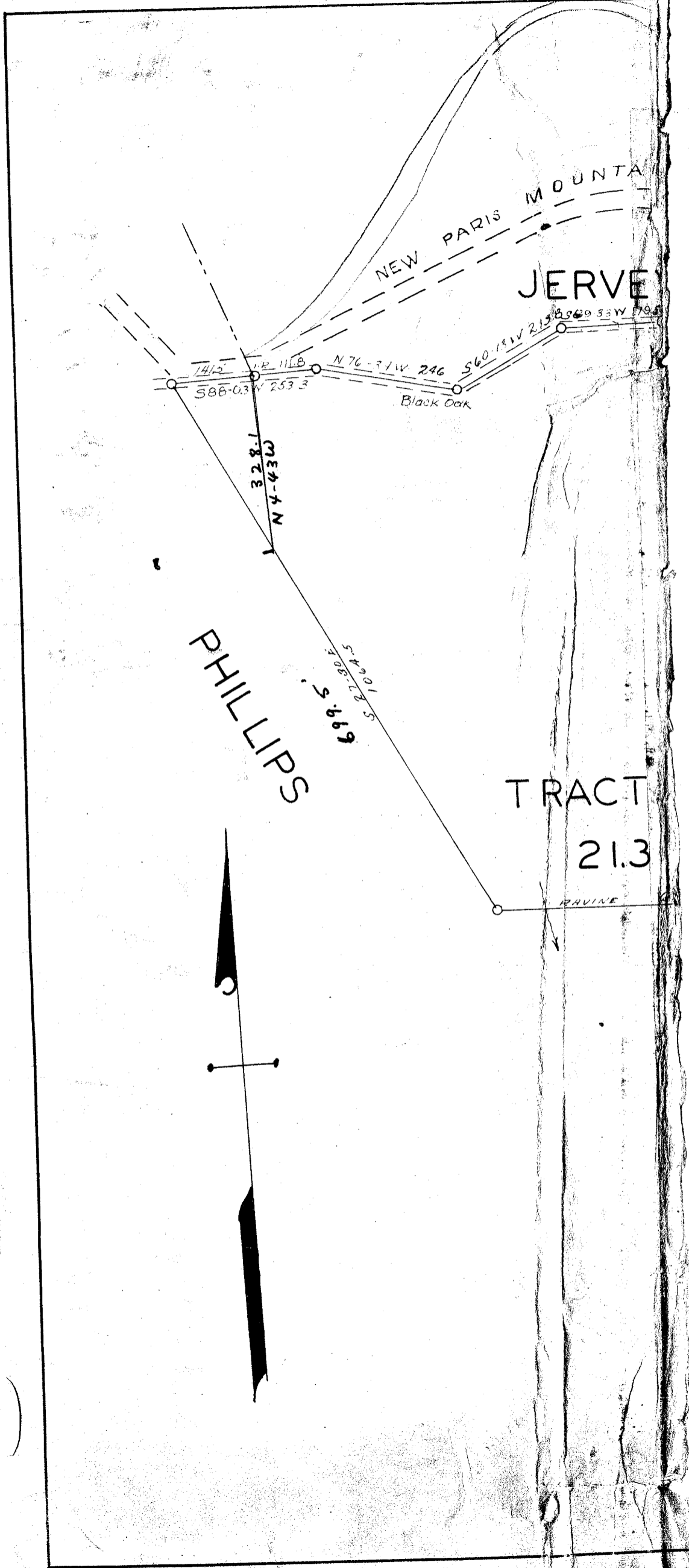
1" = 200'

This Map Was Made From Plat Of Same Property As Surveyed And Platted By Dalton & Neves, Engrs. July 1933. Further Division Of This Tract Was Made By Me In June 1944, July 1945, And March 1946. No Revision In Original Alignment Or Distance Has Been Made. The Boundaries Are Traced From Above Mentioned Plat.
 Madison H. Woodward, R.R.

#12371 Filed This 26 day of June 1947
 And Recorded in Vol. P Page 137 at M.
 Ollie Farnsworth
 Register Mesne Conveyance Greenville County, S.C.

820
 182
 1003

4
 A
 5



21.3
 25.4
 14.6
 9.2
 35.79
 2.87

 109.16